



# Upgrading OmniSwitch 6800 Series Switches to 5.3.1.R02

---

## Overview

This instruction sheet documents how to upgrade OmniSwitch 6800 Series switches to 5.3.1.R02 software. Alcatel recommends using WebView instead of the CLI to upgrade image files. These steps are described in [Upgrading the Image Files with WebView on page 2](#).

---

**NOTE.** No BootROM or MiniBoot upgrade is required in this release.

---

As an option, you can also upgrade image files with the CLI. These steps are described in [Upgrading the Image Files with the CLI on page 8](#).

---

**CAUTION.** This instruction sheet only applies to users upgrading to 5.3.1.R02. Do not use this instruction sheet for upgrades on later builds.

---

## Prerequisites

This instruction sheet requires that the following conditions exist or are performed before upgrading:

- If the CLI is used all CLI commands must be executed via a Console Port connection, not through a Telnet session. If you are performing a remote upgrade, then the console port must be connected through a terminal server (via Telnet, PuTTY, etc.) in the same location as the switch you are upgrading.
- The person performing the upgrade must:
  - be the responsible party for maintaining the switches' configuration
  - be aware of any issues that may arise from a network outage caused by improperly loading this code
  - understand that the switch must be rebooted and network users will be affected by this procedure
  - have a working knowledge of the switch to configure it to accept an FTP connection through the EMP or Network Interface (NI) Ethernet port.

---

**WARNING.** Do not proceed until all the above prerequisites have been met.

---

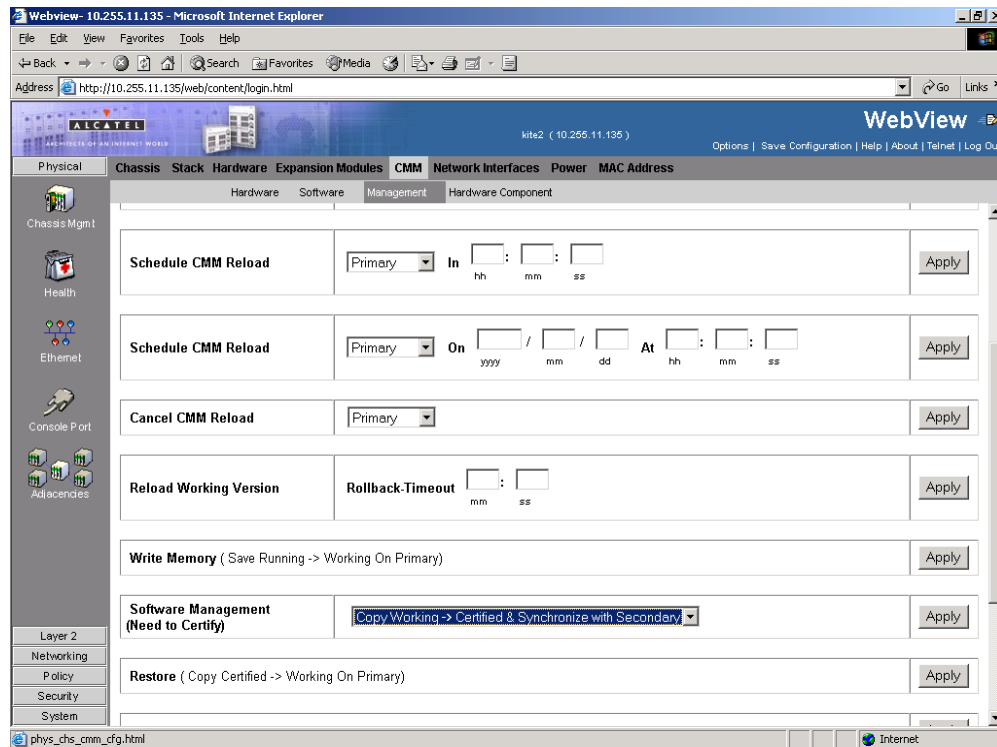
# Upgrading the Image Files with WebView

---

**Recommendation.** Review all steps in this procedure before beginning.

---

- 1 Make sure that the existing code is properly synchronized by selecting **Physical > Chassis Mgmt > CMM > Management** as shown below:



Select **Copy Working -> Certified on Primary** in the **Software Management** box for standalone switches or select **Copy Working -> Certified & Synchronized with Secondary** in the **Software Management** box and click **Apply**. Wait for the command to finish on all switches.

---

**Note.** wait for the synchronization process to complete before proceeding to the next step.

---

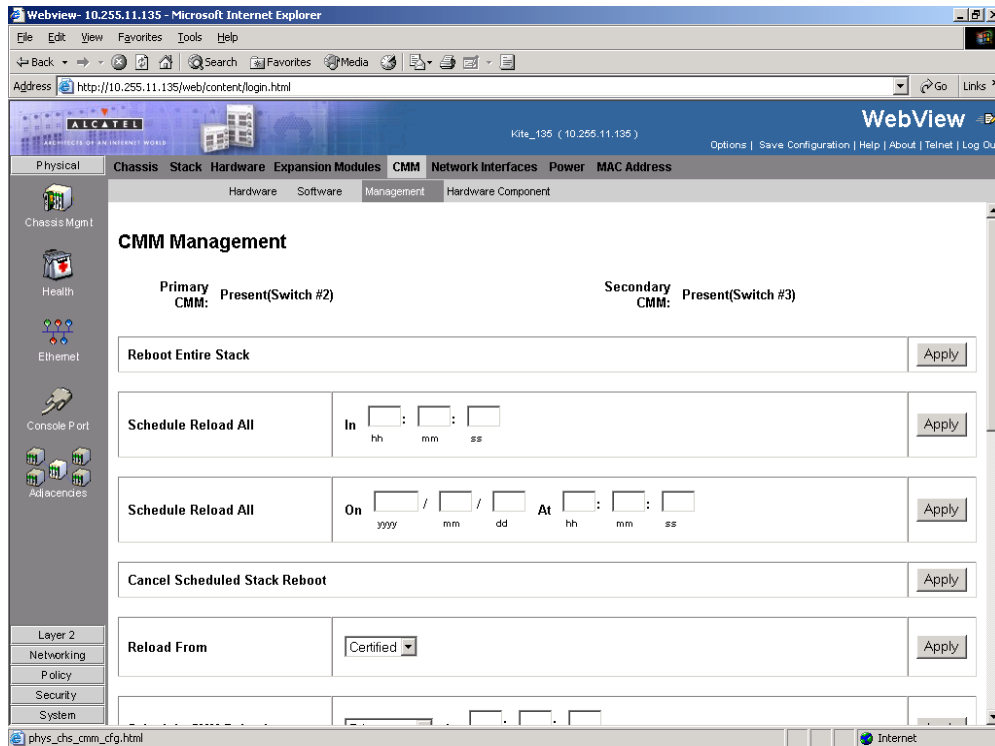
- 2 FTP the 5.3.1.R02 image files to the **/flash/working** directory.

---

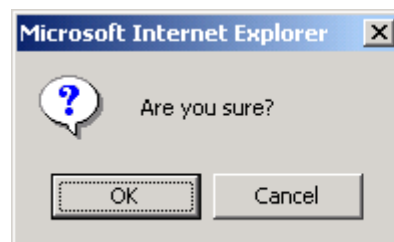
**Note.** If you have two or more switches in a stack make sure you FTP the files to the primary switch.

---

- 3 Log into WebView.
- 4 Select **Physical > Chassis Mgmt > CMM > Management** as shown below:



- 5 In the **Reload From** box Select **Working** and Click **Apply**. The following pop-up window will be displayed:



- 6 Click **OK**. The switch will now synchronize files from the working directory with all other stacks (if applicable). Then the switch will now reboot to the new working version.

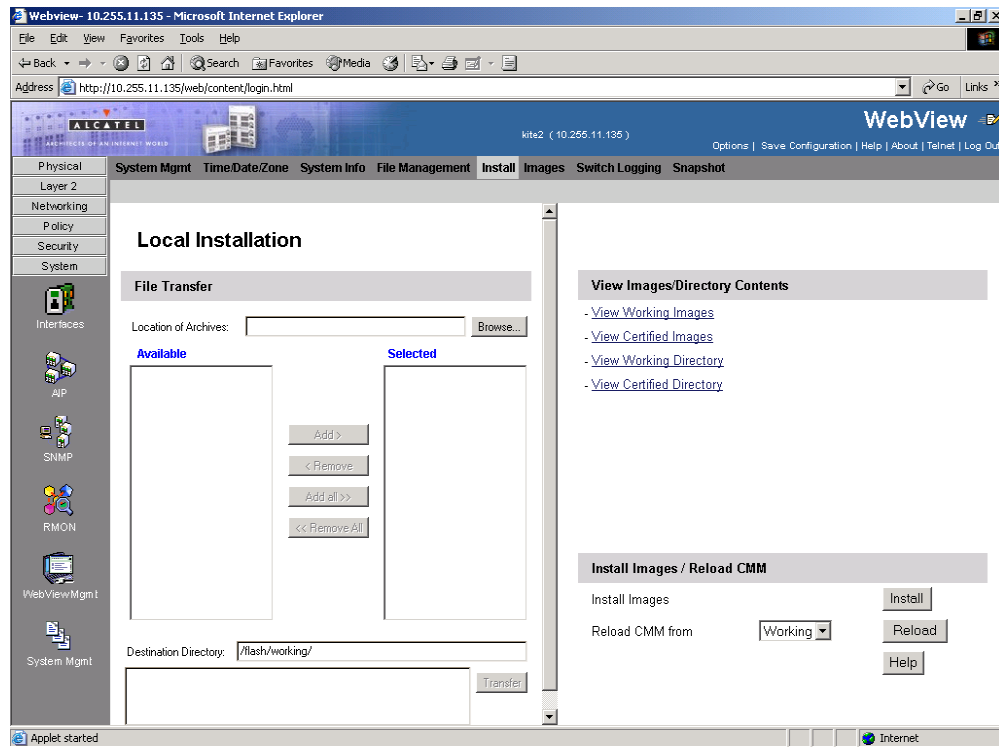
---

**Note.** The **Reload From Working** process can take up to 20 minutes in a stacked environment. This process should *not* be interrupted.

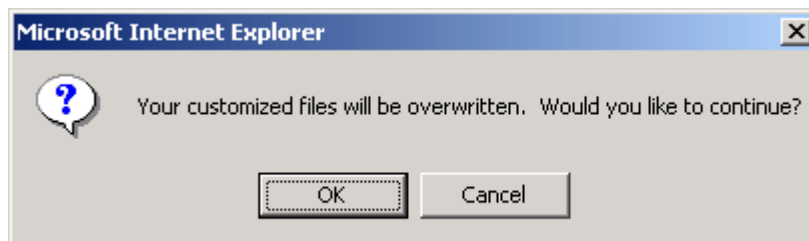
---

- 7 Log into WebView.

- 8 Select **System > System Mgmt > Install** as shown below:

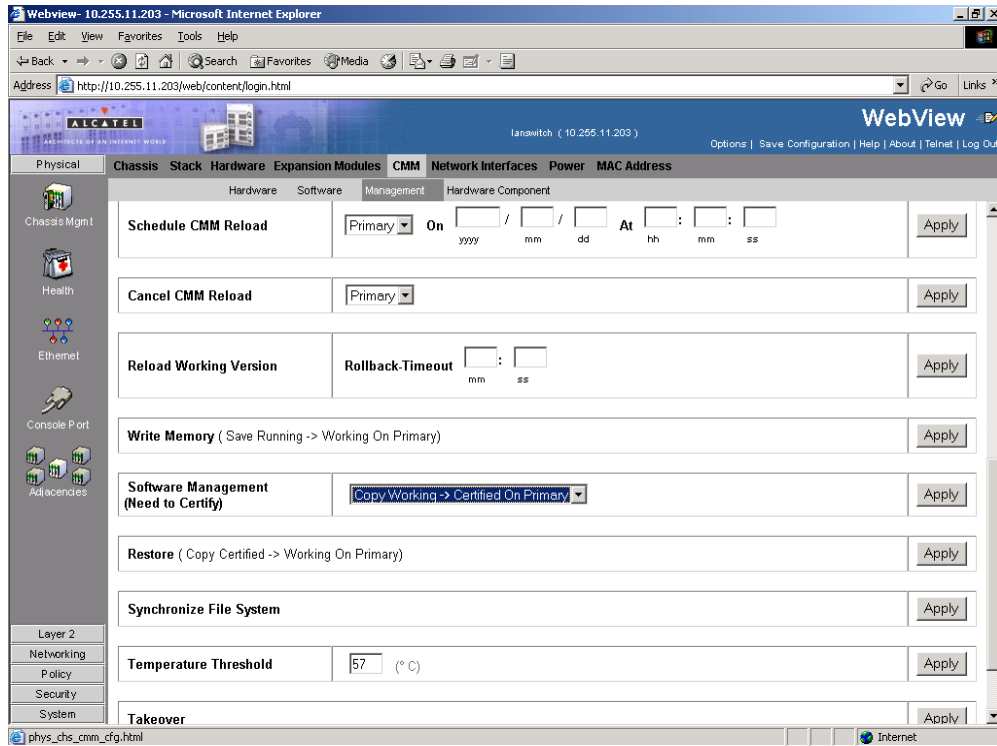


- 9 Click the **Install** button. The following pop-up window will be displayed:

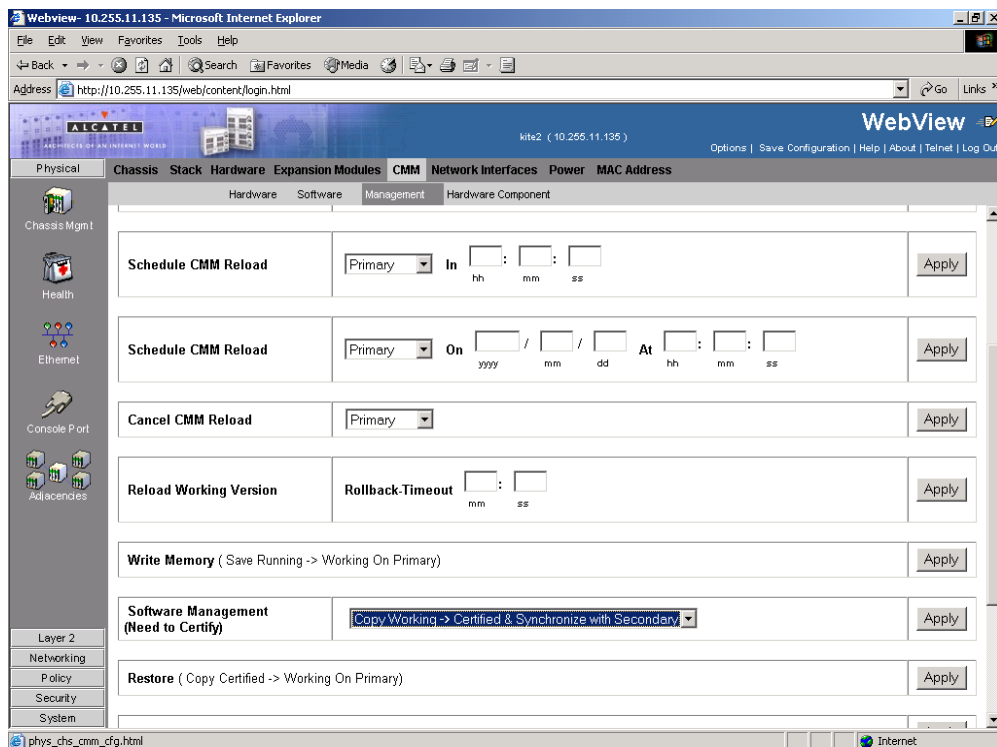


- 10 Click **OK**.
- 11 Select **Physical > Chassis Mgmt > CMM > Management**.

- 12** If you have a standalone switch select **Copy Working -> Certified on Primary** in the **Software Management** box as shown below:



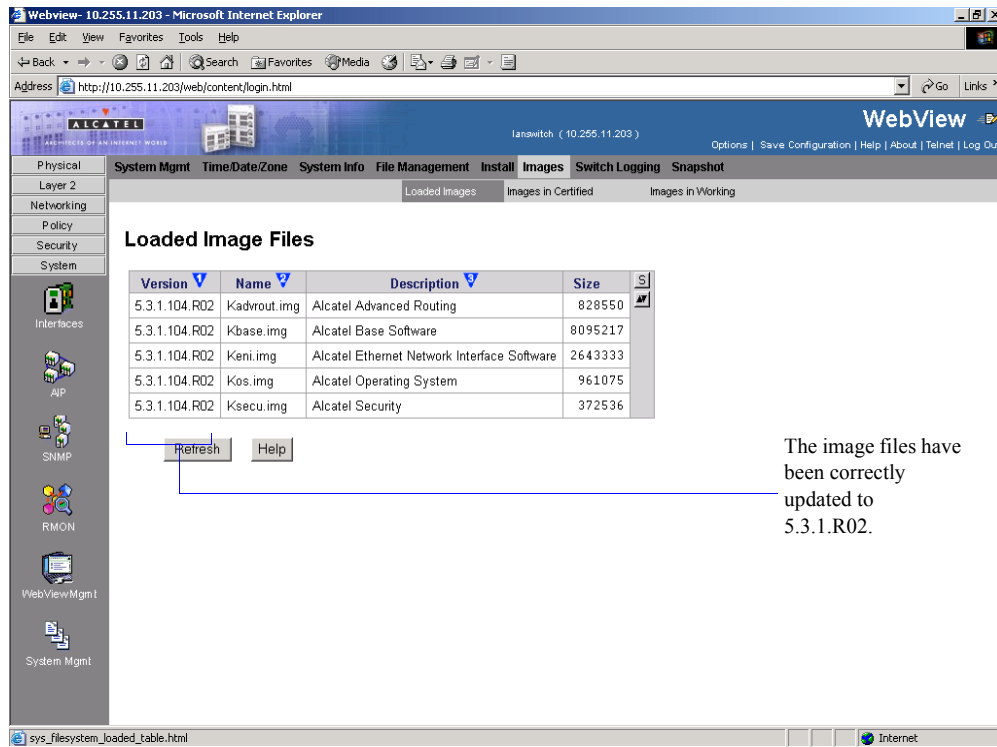
- If you have two or more switches in a stack select **Copy Working -> Certified & Synchronized with Secondary** in the **Software Management** box as shown below:



The upgrade to 5.3.1.R02 is now complete. (See [Verifying the Upgrade with WebView on page 7](#) for more information.)

## Verifying the Upgrade with WebView

You can use WebView to verify that your upgrade is successful. To verify that the software was correctly upgraded to 5.3.1.R02, select **System > System Mgmt > Images > Loaded Images** as shown below:



The screenshot shows the WebView interface for an Alcatel switch. The navigation menu on the left includes Physical, Layer 2, Networking, Policy, Security, and System. The main menu includes System Mgmt, Time/Date/Zone, System Info, File Management, Install, Images, Switch Logging, and Snapshot. The 'Images' menu is expanded to show 'Loaded Images', 'Images in Certified', and 'Images in Working'. The 'Loaded Image Files' table is displayed with the following data:

Version	Name	Description	Size	S
5.3.1.104.R02	Kadvrout.img	Alcatel Advanced Routing	828550	
5.3.1.104.R02	Kbase.img	Alcatel Base Software	8095217	
5.3.1.104.R02	Keni.img	Alcatel Ethernet Network Interface Software	2643333	
5.3.1.104.R02	Kos.img	Alcatel Operating System	961075	
5.3.1.104.R02	Ksecu.img	Alcatel Security	372536	

Below the table are 'Refresh' and 'Help' buttons. A blue arrow points from the 'Refresh' button to the text: 'The image files have been correctly updated to 5.3.1.R02.'

In addition, you should also select **System > System Mgmt > Images > Images in Certified** and **System > System Mgmt > Images > Images in Working** to verify that Certified and Working directories have been correctly upgraded to Release 5.3.1.R02.

---

**Note.** Refer to the online help and to the *OmniSwitch 6800 Series Switch Management Guide* for more documentation on WebView.

---

# Upgrading the Image Files with the CLI

Perform the steps below to upgrade the image files with the CLI. All steps in this procedure should be reviewed before beginning.

---

**NOTE.** Alcatel recommends using WebView instead of the CLI to upgrade image files. See [Upgrading the Image Files with WebView on page 2](#) for more information.

---

- 1** Make sure that the existing code is properly synchronized by executing the **copy working certified command** on standalone switches or a **copy working certified flash-synchro** command on a stack of switches. Wait for the command to finish on all switches.

---

**Note.** wait for the synchronization process to complete before proceeding to the next step.

---

- 2** FTP the 5.3.1.R02 image files to the **/flash/working** directory.

---

**Note.** If you have two or more switches in a stack make sure you FTP the files to the primary switch.

---

- 3** Log into the switch.

---

**Note.** In dual redundant configurations you must log into the primary switch.

---

- 4** Enter:

```
-> reload working no rollback-timeout
```

The switch will now synchronize files from the working directory with all other stacks (if applicable). Then the switch will now reboot to the new working version.

---

**Note.** The **reload working no rollback-timeout** command can take up to 20 minutes in a stacked environment. This command should *not* be interrupted.

---

- 5** Log into the switch.

- 6** At the CLI prompt enter:

```
-> install *.img
```

- 7** If you have a standalone switch enter:

```
-> copy working certified
```

If you have two or more switches in a stack enter:

```
-> copy working certified flash-synchro
```

Wait for the command to finish executing.



The upgrade to 5.3.1.R02 is now complete. (See [Verifying the Upgrade with the CLI on page 10](#) for more information.)

## Verifying the Upgrade with the CLI

To verify that the software is correctly upgraded to 5.3.1.R02, use the **show microcode** command as shown below:

```
-> show microcode
      Package           Release      Size      Description
-----+-----+-----+-----+
Kadvrout.img          5.3.1.111.R02      828548 Alcatel Advanced Routing
Kbase.img             5.3.1.111.R02     8094305 Alcatel Base Software
Kdiag.img            5.3.1.111.R02      734018 Alcatel Diagnostics Archive
Keni.img             5.3.1.111.R02     2639551 Alcatel Ethernet Network Interface
Kos.img              5.3.1.111.R02      961085 Alcatel Operating System
Ksecu.img            5.3.1.111.R02      372533 Alcatel Security
```

The image files have been correctly updated to 5.3.1.R02.

---

**Note.** Refer to the *OmniSwitch CLI Reference Guide* for complete documentation on CLI commands.

---



Alcatel Internetworking  
26801 West Agoura Road  
Calabasas, CA 91301  
(818) 880-3500 FAX (818) 880-3505

US Customer Support: (800) 995-2696  
International Customer Support: (818) 878-4507  
Internet: <http://eservice.ind.alcatel.com>